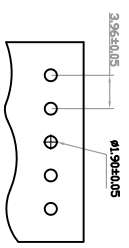
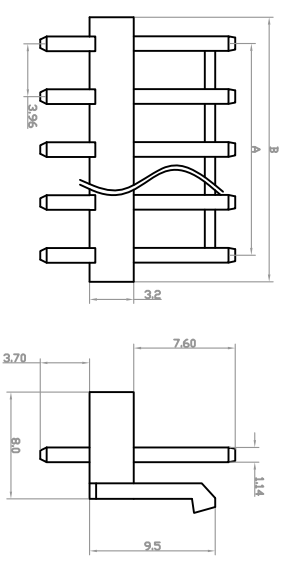
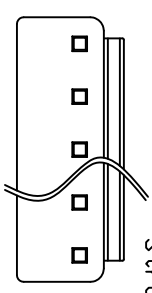


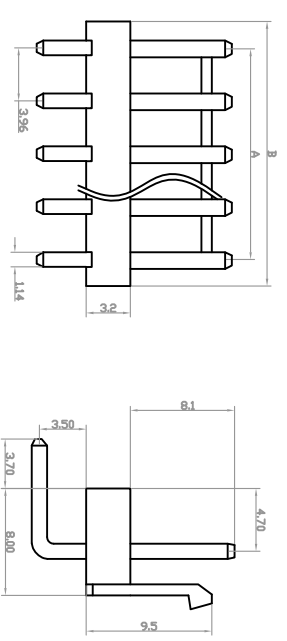
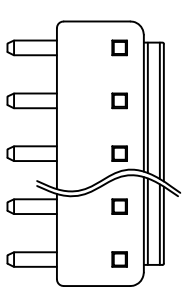
圖號 <b>MARK</b>	設備內容 <b>MODIFICATION</b>	日期 <b>DATE</b>	修改 <b>DRAW</b>	核准 <b>APPROVE</b>
△	圖面修訂	2015.03.09		Water



CW3962S  
Straight Angle



CW3962R  
Right Angle



**3.96mm pitch single row headers**  
**CW3962 Aeries**  
 Pole#2-12  
 Material:insulator(NYLON UL 94V-0  
 Conductor:14mm square pin:brass:tin plated  
 Mate's wire CH3962 series housing  
 Specifications  
 Current rating:5A AC,DC  
 Voltage rating:250V AC,DC  
 Temperature range:-25~+85°C  
 Insulation resistance:1,000 A/C minute  
 Applicable PC board thickness:1.63\*(1.6mm)

CIRCUITS	PATE NO	DIM A	DIM B	CIRCUITS	PATE NO	DIM A	DIM B
2	CW3962X-02	3.96	8.12	12	CW3962X-12	43.56	47.82
3	CW3962X-03	7.62	12.08				
4	CW3962X-04	11.88	16.04				
5	CW3962X-05	15.84	20.00				
6	CW3962X-06	19.80	23.96				
7	CW3962X-07	23.76	27.92				
8	CW3962X-08	27.72	31.88				
9	CW3962X-09	31.68	35.94				
10	CW3962X-10	35.64	39.90				
11	CW3962X-11	39.60	43.86				

**丞永實業有限公司**

UNLESS OTHERWISE SPECIFIED TOLERANCES ARE		單位	名稱 / 料號	WAFFER 396 DIP 系列
TOLERANCES ARE		Units	Title / Part No.	CW3962X-XX
.X	±0.30	MM		
.XX	±0.20			
.XXX	±0.10			
.X°	±3.0°	比例	材質	顏色
.XX°	±2.0°	Scale	Material	Color
.XXX°	±1.0°	頁次	角法	版本
		SHEET	PROJ.	REV.
App. By/Date	批准 / 日期	1/1		C

1 2 3 4 5 6 7

E D C B A